



StockView™

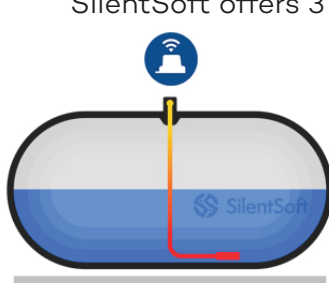
Pressure Sensor - Fuel / LoRa - Sigfox

The new SilentSoft platform allows to integrate the new **Neevo** Sensor. You can benefit from the StockView™ service in countries with LoRa and Sigfox networks (lora-alliance.org or sigfox.com).

The **Neevo** innovates allowing long range radio transmissions and reduces interference obstacles at installation (building, basement, buried tank etc...). The technology rests on Sigfox and LoRa networks and protocols.

Neevo is a Swiss product responding to high quality standards.

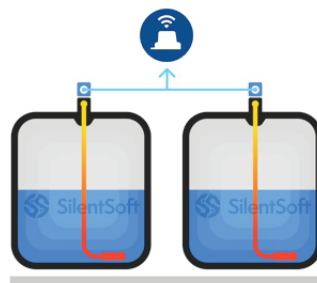
SilentSoft offers 3 references :



Standard

The pressure measured at the bottom of the tank is compared with the atmospheric pressure from close meteo sites.

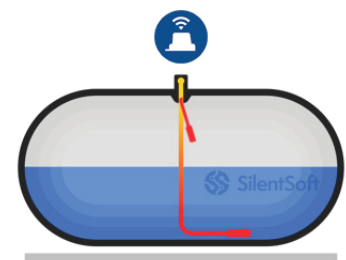
LoRa:
NEEVO-LORA-CH1-1SENS-5-1EGF (Swisscom)
NEEVO-LORA-FR1-1SENS-5-1EGF (Bouygues Telecom)
NEEVO-LORA-BE1-1SENS-5-1EGF (Proximus)
Sigfox:
NEEVO-SIGFOX-1SENS-5-1EGF



Multi

One transmitter allows to manage two tanks in parallel. This option reduces costs when two tanks are physically side by side.

LoRa:
NEEVO-LORA-CH1-2SENS-5/5-2EGF
Sigfox:
NEEVO-SIGFOX-2SENS-5/5-2EGF



Differential

The pressure measured at the bottom of the tank is compared with the pressure from the second sensor installed in the tank on top of the measured product.

LoRa:
NEEVO-LORA-CH1-2SENS-5/5-1DEGF
Sigfox:
NEEVO-SIGFOX-2SENS-5/5-1DEGF



Technical Data Sheet

Fuel tank



Neevo by SilentSoft

Sensor:

2 0-5V ratiometric inputs up to 2 SENS.5 pressure sensors

M 12 connector between the modem and the probe to allow the spacer to be changed

Data transmission:

LPWAN Sigfox or LoRa (868/915 MHz)

Supply:

Lithium Battery (3.0 V, 3.0 Ah)

Battery life:

5 to 10 years

IP protection level:

IP68 (with molding)


Dimensions / Weight:

91x69x31 mm / 120 gr

Temperature range:

-40°C to +60°C

Certifications:

 Ex ia [ia Ga] IIB T3 Ga
II 1(1) G

Certificate No.
SEV 19 ATEX 01 13 X
IECEX SEV 19.0009 X

For more information and advice about our solutions, please contact us or visit our web site, we are at your service!





StockView™

Sensor for propane / LPG tanks - LoRa / Sigfox

The new SilentSoft platform allows to integrate the new **Neevo** Sensor. You can benefit from the StockView™ service in countries with LoRa and Sigfox networks (lora-alliance.org or sigfox.com).

The **Neevo** innovates allowing long range radio transmissions and reduces interference obstacles at installation (building, basement, buried tank etc...). The technology rests on Sigfox and LoRa networks and protocols.

Neevo is a Swiss product responding to high quality standards.

Standard

The tank level in the tank is captured with a hall effect sensor directly installed on the gauge of the tank.

SilentSoft offers 2 references:

LoRa: NEEVO-LORA-CH1-ROCHJR

Sigfox: NEEVO-SIGFOX-ROCHJR



Technical Data Sheet

LPG tank

Neevo by SilentSoft

Sensor:
Rochester JR or R3D

Data transmission:
LPWAN Sigfox or LoRa (868/915 MHz)

Power supply:
Lithium Battery (3.0 V, 3.0 Ah)

Battery life:
5 to 10 years

IP protection level:
IP68 (with molding)

Dimensions / Weight:
91x69x31 mm / 120 gr

Temperature range:
-30°C to +60°C

Certifications:



Ex ia [ia Ga] IIB T3 Ga
II 1(1) G

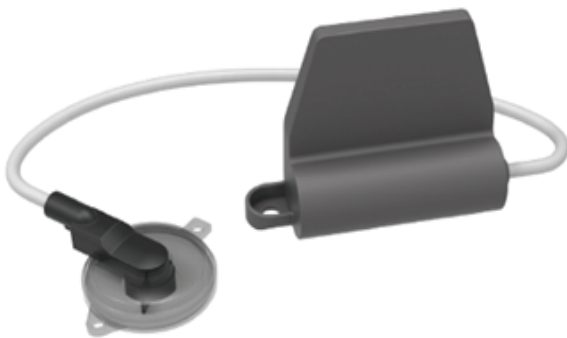
Segurança



ia [ia Ga] IIB T3G



CL I, DIV 1, GP C; CL I, Zone 0, A Ex ia [ia] IIB T3;
CL I, Zone 0 Ex ia [ia] IIB T3 provides I.S. circuits to
CL I, DIV 1, GP C,D; CL I, Zone 0, GP IIB, when
installed per **nevo** ControlDrawing



For more information and advice about our solutions, please contact us or visit our web site,
we are at your service!

